



**ALASKA DIVISION OF HOMELAND SECURITY &  
EMERGENCY MANAGEMENT**



**SITUATION REPORT 22-047 • FEBRUARY 16, 2022**

Toll-Free 1.800.478.2337

Anchorage Area 907.428.7000

SEOC 907.428.7100

<p><b><u>SEOC Preparedness Level</u></b> Level 2 – Heightened Awareness</p>	<p><a href="http://ready.alaska.gov">http://ready.alaska.gov</a></p>	<p><b><u>National Terrorism Advisory System:</u></b> <a href="#">Read the NTAS Bulletin here</a></p>
<p><b><u>Maritime Security (MARSEC)</u></b> Level:1-Minimum Appropriate Security Measures</p>	<p><b>WHO Novel Coronavirus Pandemic (COVID-19):</b> <a href="#">2019 Novel Coronavirus</a></p>	<p><b><u>Alaska Military Installation Force Protection Level:</u></b> FPCON Bravo</p>

(Significant changes from previous situation reports are in red.)

**Significant Issues:**

**SEOC at Level 2 – *Heightened Awareness* – Statewide Severe Weather Impacts**

The State Emergency Operations Center (SEOC) remains activated in a hybrid virtual/in-person Incident Command structure to manage the current state declared disaster responses and other incidents arising statewide.

**Threat Level Changes:**

None

**State of Alaska Department of Health and Social Services (DHSS)**

DHSS is now leading the State of Alaska COVID-19 Recovery through Department Operations, supported by SEOC and other state departments as required.

For current COVID-19 information, see:

<https://covid19.alaska.gov/>

<https://www.cdc.gov/coronavirus/2019-ncov/index.html>

**NTAS BULLETIN**

To read current or expired advisories, click the link below:

<https://www.dhs.gov/national-terrorism-advisory-system>

**Travel Alerts and Conditions**

For current driving conditions dial 511 or link to <http://511.alaska.gov/>

**Barry Arm Landslide / Tsunami Risk**

For the latest information on the Barry Arm Landslide and Tsunami risk, click here: [DGGs Barry Arm Landslide and Tsunami Hazard](#)

## Recent Earthquakes

USGS Earthquake Information: <http://earthquake.usgs.gov/>

National Tsunami Warning Center: <http://tsunami.gov/>

## Alaska Volcanoes

**Davidof** Alert Level: **Advisory** and Aviation Color Code: **Yellow**

**Great Sitkin** Alert Level: **Watch** and Aviation Color Code: **Orange**

**Pavlof** Alert Level: **Watch** and Aviation Color Code: **Orange**

**Semisopchnoi** Alert Level: **Watch** and Aviation Color Code: **Orange**

For Alaska Volcano updates, go to: <https://www.avo.alaska.edu/>

## Air Quality Index (AQI) Advisories

A Stage 1 Alert is in effect for the Fairbanks Zone and a Stage 2 Alert for the North Pole Zone until 1:00 P.M. today.

For the most up to date Air Quality Index Advisories:

<http://dec.alaska.gov/Applications/Air/airtoolsweb/Home/Index>

## Spills of Oil and Hazardous Substances

The ADEC Spill Prevention and Response page is located at:

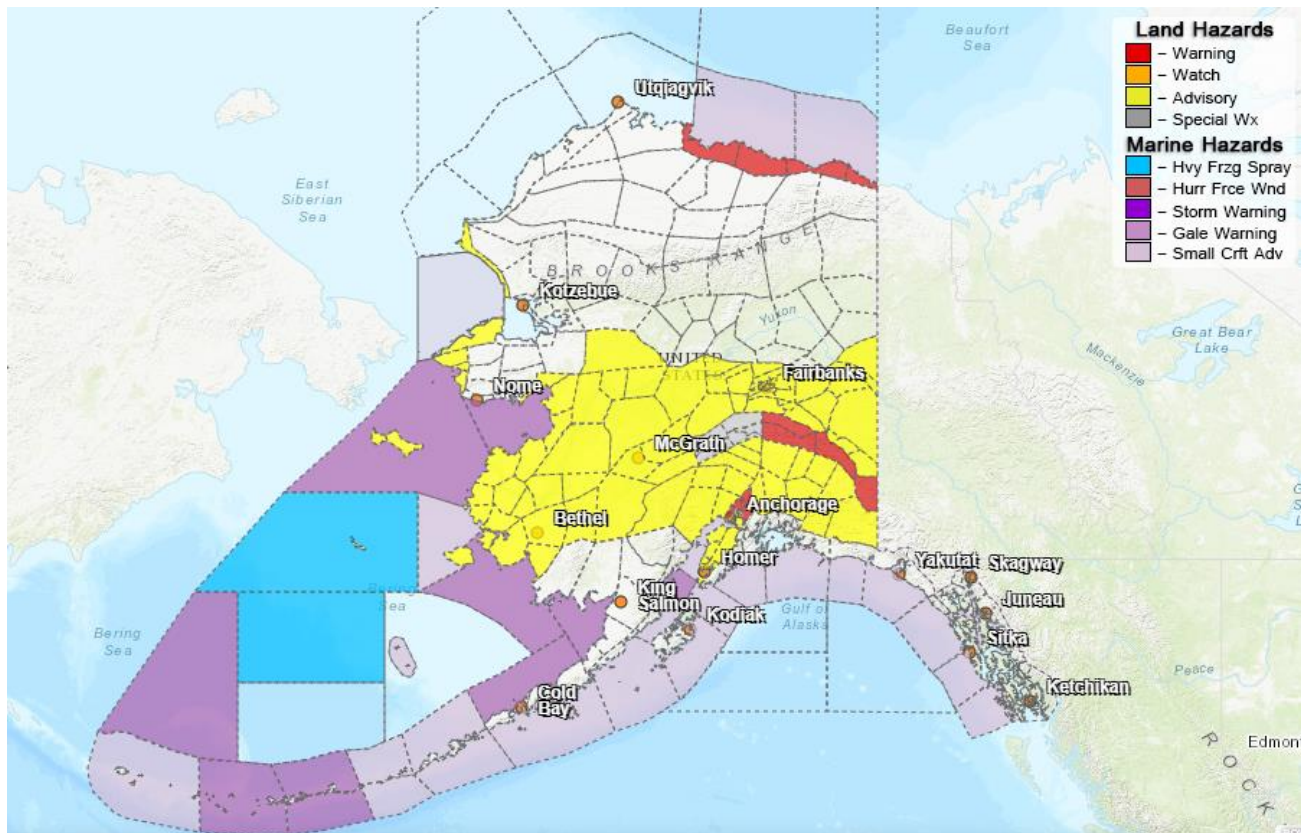
<http://dec.alaska.gov/spar/ppr/spill-information/response/>

## Alaska Cyber Security Information

State Employees may sign up for cyber security notifications and alerts at

<https://oit.alaska.gov/security>

## Significant Weather:



A Wind Chill Warning remains in effect for the Central and Eastern Beaufort Sea Coast until 9:00 A.M. tomorrow. Wind chills of up to -60°F are possible.

A Winter Storm Warning is in effect until 9:00 A.M. Friday for the Eastern Alaska Range. 10 to 15 inches of snow are possible, with localized amounts of up to 24 inches. The highest snowfall amounts are expected along the Richardson Highway and Tok Cutoff.

Wind Chill Advisories remain in effect for the following areas:

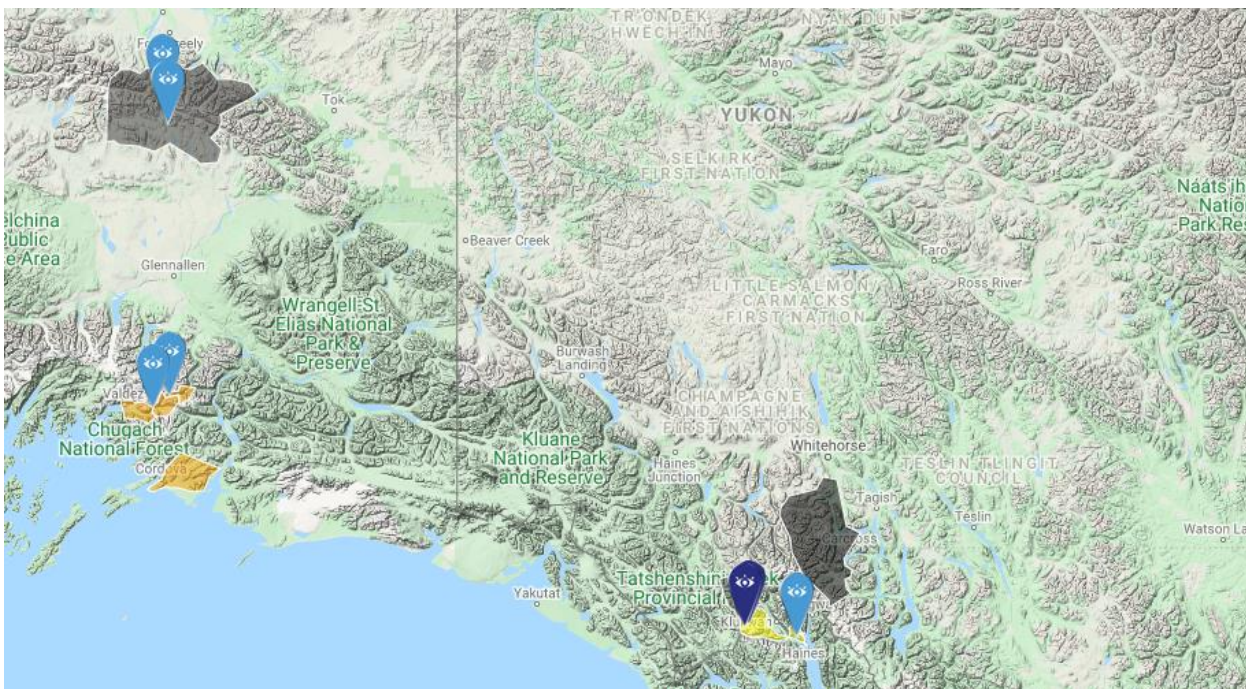
- St. Lawrence Island and the Bering Strait Coast until 6:00 A.M. tomorrow.
- Chukchi Sea Coast, Eastern Norton Sound and Nulato Hills until 9:00 A.M. tomorrow.

Winter Weather Advisories are in effect for the following areas:

- Lower Kuskokwim Valley – until noon today. 3 to 6 inches of snow.
- Yukon Delta, Lower Yukon Valley and the Upper Kuskokwim Valley – until noon today. Up to 2 inches of snow and light ice accumulation is possible.
- Anchorage – until 9:00 A.M. today. 2 to 4 inches of snow, rain and freezing rain.
- Western Kenai Peninsula – until 9:00 A.M. today. Up to 2 inches of mixed precipitation.
- Kuskokwim Delta – until 9:00 A.M. today. Blowing snow and high winds.
- Matanuska Valley – until 5:00 P.M. today. 4 to 8 inches of snow, rain and freezing rain.
- Copper River Basin – until 6:00 P.M. today. Up to 8 inches of snow with localized amounts closer to 12 inches north of Glennallen.
- Susitna Valley – until 6:00 P.M. today. Total snow accumulations of 5 to 10 inches.
- Deltana and Tanana Flats and the Upper Tanana Valley – until 3:00 A.M. tomorrow. 4 to 6 inches of snow.
- Central Interior and the Middle Tanana Valley – 3:00 P.M. tomorrow through noon on Friday. 3 to 7 inches of snow.

For more information and the most current weather, Watches / Warnings / Advisories go to: <http://www.weather.gov/arh>.

### **Avalanche Forecast:**



There are areas near Thompson Pass, Valdez and Cordova with considerable risk, near Haines with moderate risk and near **Hatcher Pass with extreme risk**.

Check the Avalanche Forecast Center closest to your area for the most up to date information on avalanche potential. <https://alaskasnow.org> or <https://www.weather.gov/afc/avalancheweather>

**The Next Situation Report:** will be 17 February 2022. A significant change in the situation or the threat level will prompt an interim report.

This report is posted on the internet at <https://ready.alaska.gov/sitrep>. To register for email distribution, go to <http://list.state.ak.us/mailman/listinfo/dhsem.situation.report>. Direct questions regarding this report to the SEOC at 907-428-7100 or [seoc@alaska.gov](mailto:seoc@alaska.gov)